





SILIA is a company founded in 2011 by Ilaria Balduino Sartori together with partners Massimo Ilarioni and Livio Spilli. The intent is to create luxurious adornments for the home, made from the extraordinary material commonly known as plexiglass, lucite, perspex.

Under the creative direction of Ilaria Balduino Sartori, the SILIA collection includes lamps, vases, table-settings, boxes, frames, trays, chandeliers...

Each piece is hand-finished by expert craftsmen, and is manufactured using varied and specialized techniques. They are most often mixed with different materials: ebony wood, brass, 24 K gold leaf.

The SILIA collection also includes partners in design meant to embody an independent voice, chosen from an international pool, who twice yearly are invited to collaborate on a special project.

All objects bearing the SILIA logo are made entirely in Italy.

SILIA
designed worldwide
made entirely in Italy



SILIA

contents

Tartaruga e Ebano

Tray, Placemat, Ice-box, Candlestick, Box, Small and Large frame

Mosaico

Tray, Guantiera, Candlestick, Box, Small and Large frame

Diana

Tray, Candle Holder, Box, Humidor , Cigar Ashtray

Degradé

Vide-Poche, Vase, Ashtray, Lighter, Box, Candle Stick , Small and Large frame

Pitone

Tray, Box

Dischi

Side - Table

Contact

Tartaruga e Ebano

Retaining the beauty without the cruelty, this collection is made of particularly beautiful faux-tortoiseshell, and ebony wood. High quality faux-tortoiseshell is difficult and costly to achieve, however the difference is immediately apparent to the eye.

Lucite, ebony wood

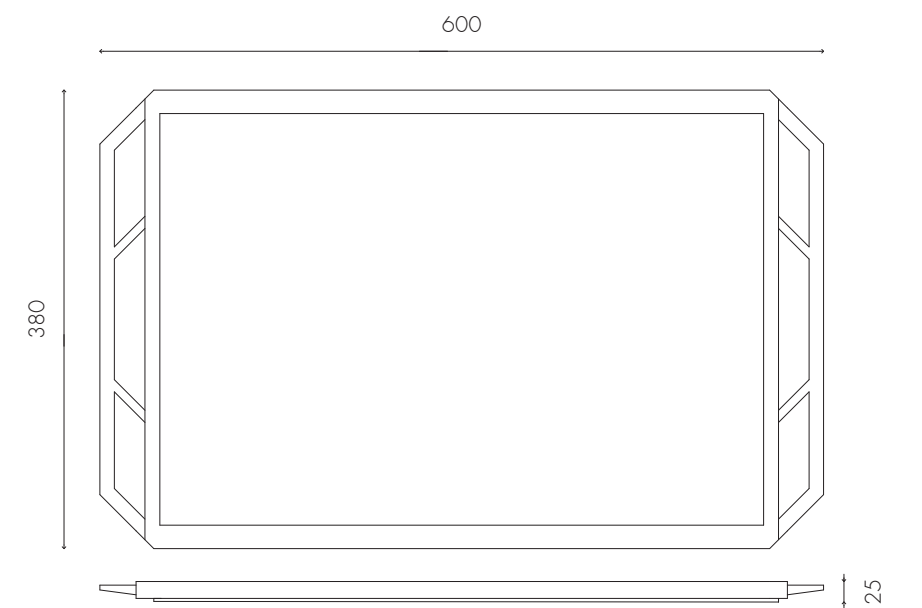




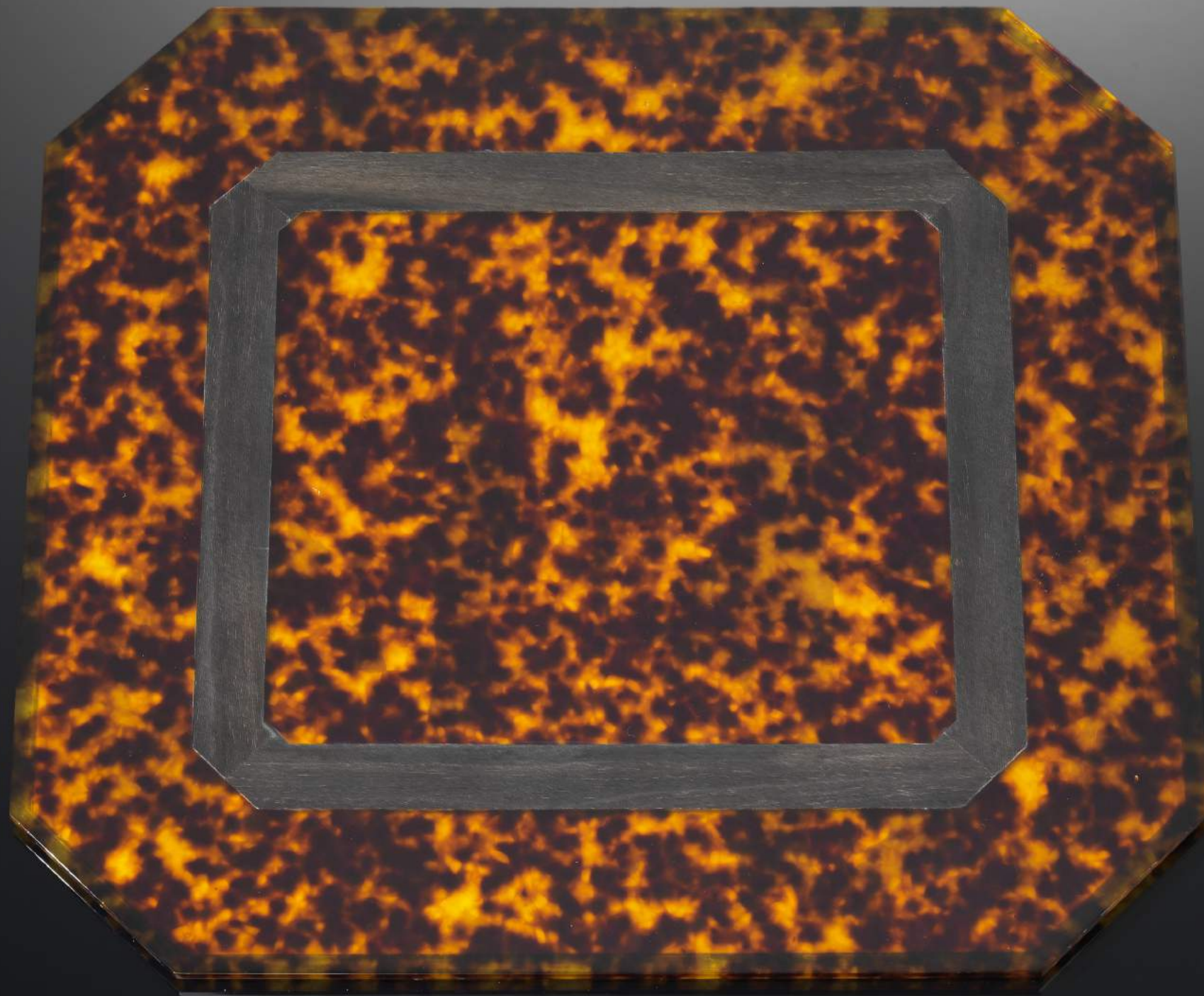


Tray

code:
TEVSOSTT

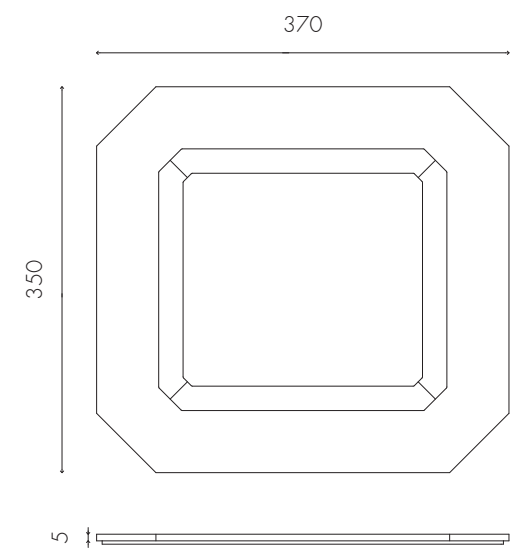


Tartaruga e Ebano



Placemat

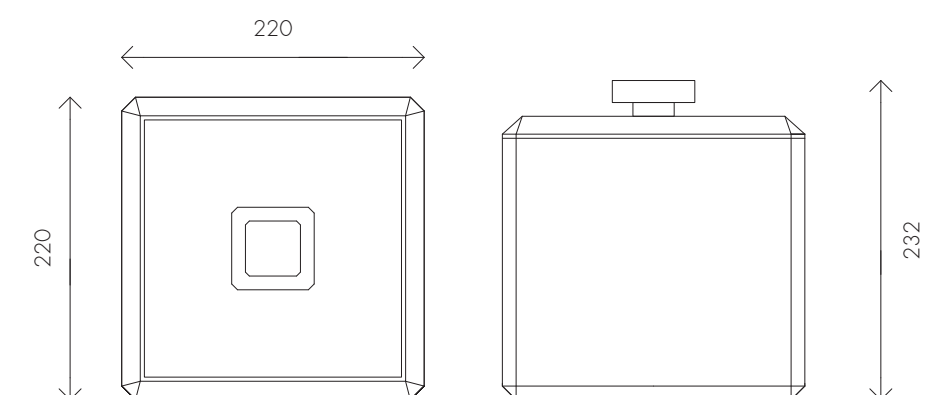
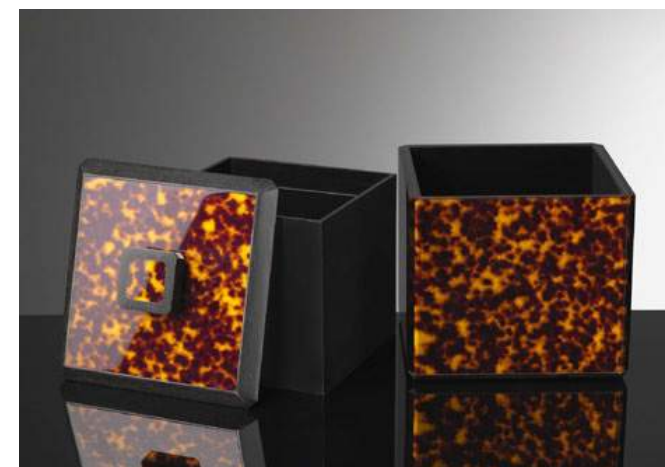
code:
TESPOSTT





Ice Box

code:
TEPGOSTT

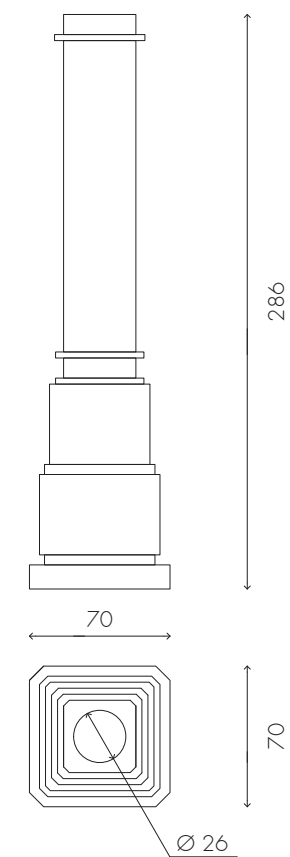


Tartaruga e Ebano



Candlestick

code:
TEPCOSTT



Tartaruga e Ebano



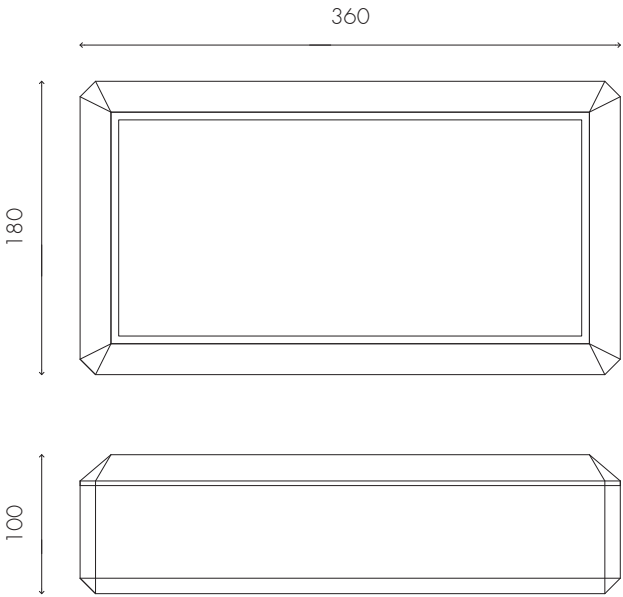


Box

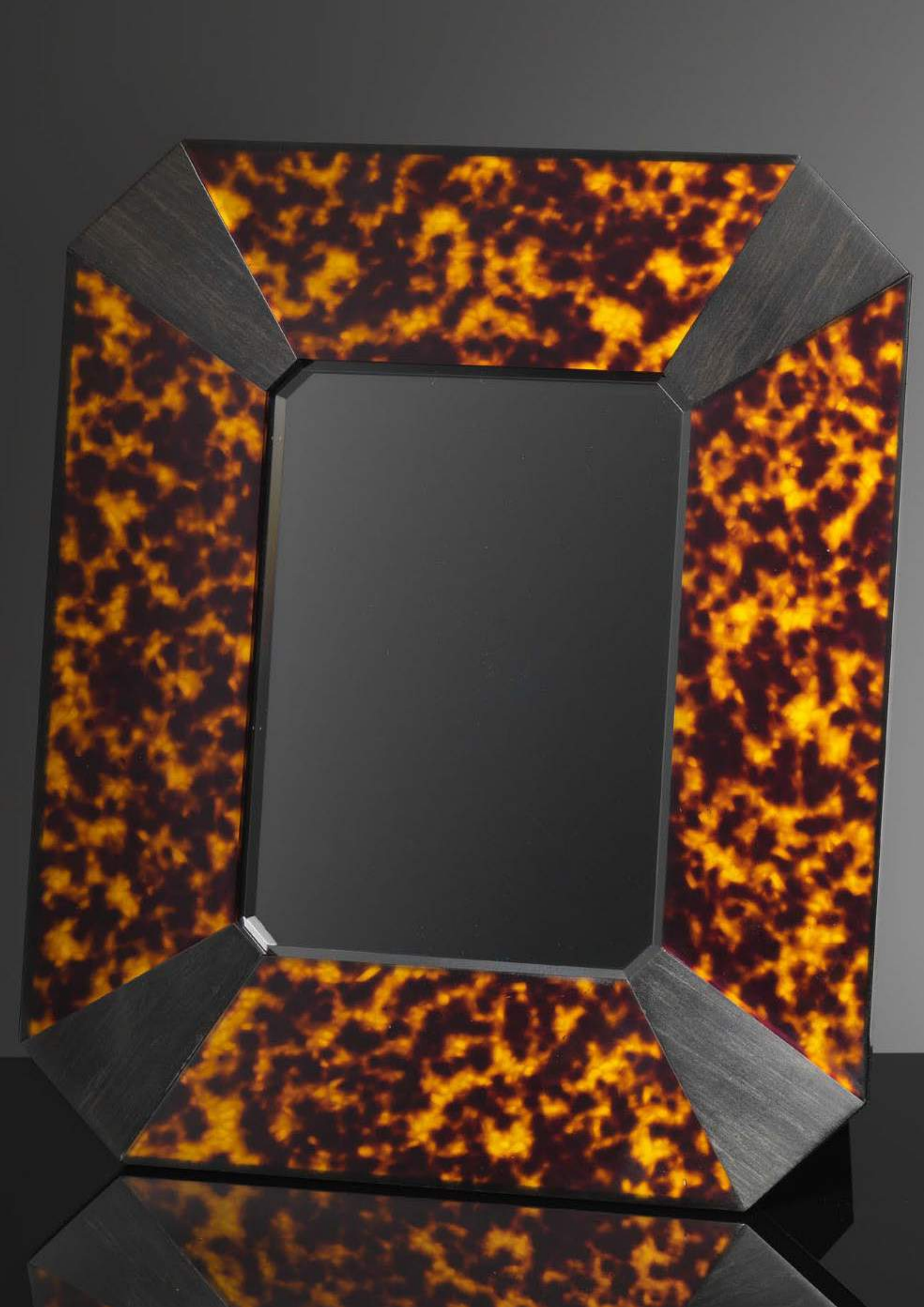
code:
TESCBGTT



NB. The tartaruga ebano box is lined entirely with 24K gold leaf

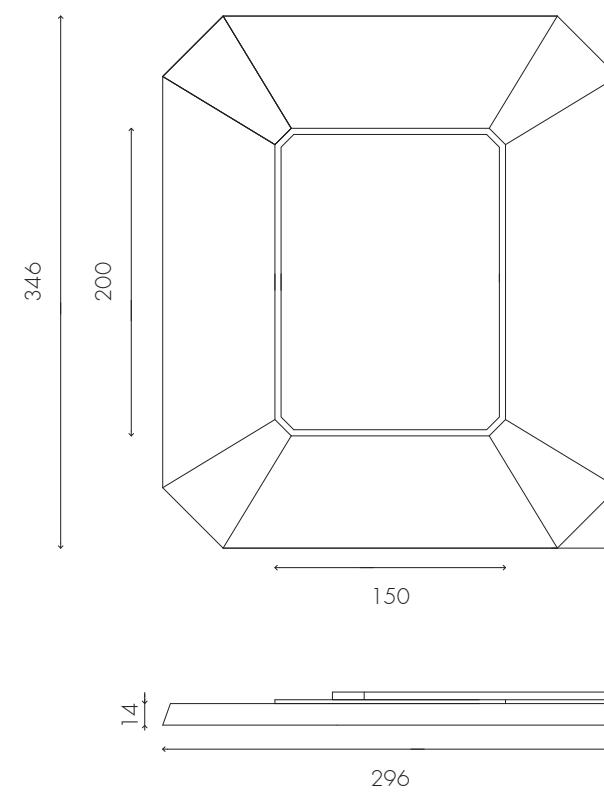






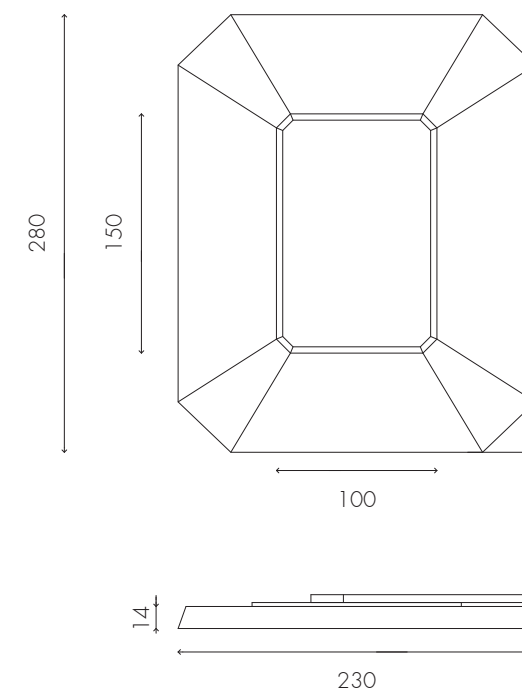
Large Frame

code:
TECRBGT



Small Frame

code:
TECRSMT

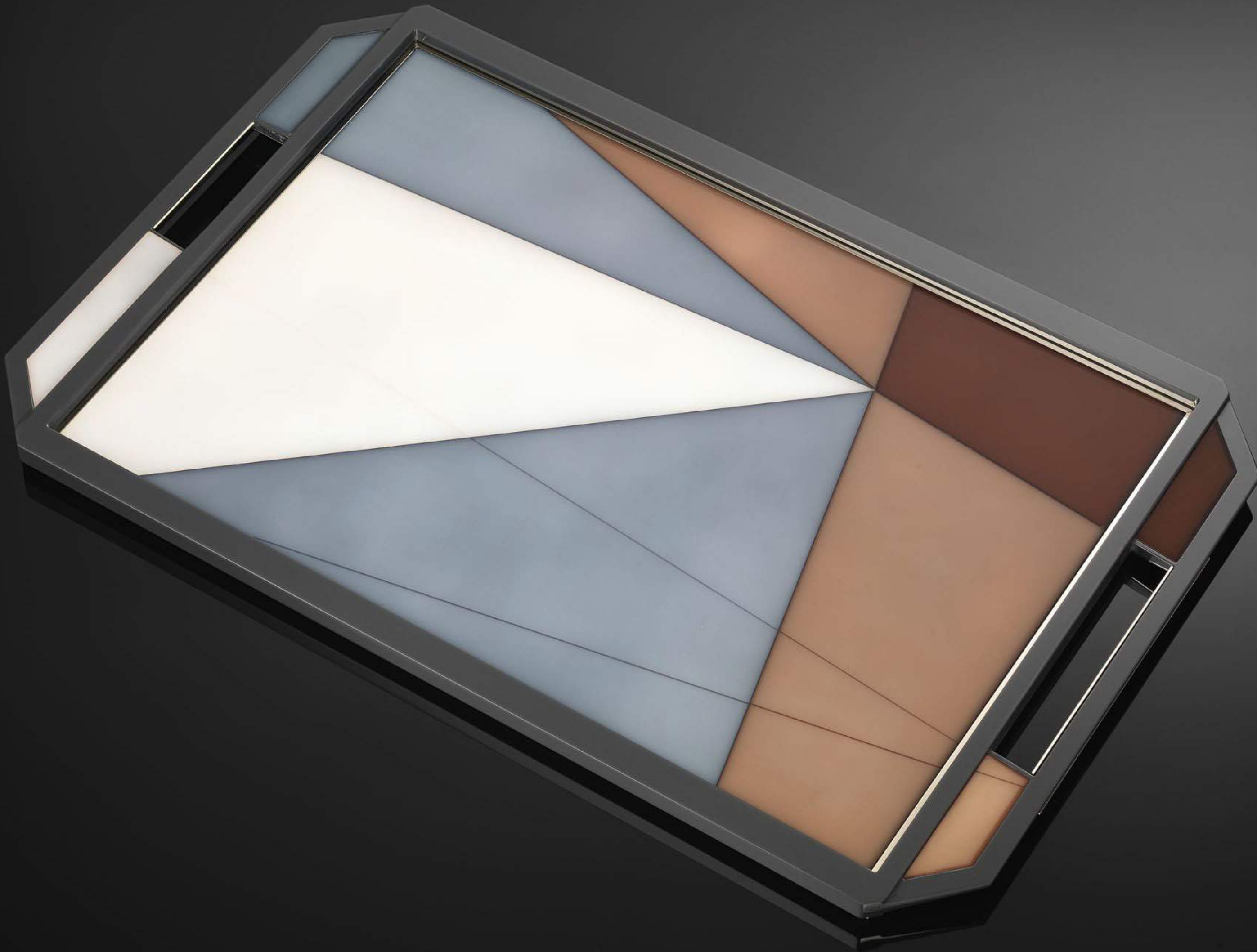


Mosaico

Inspired by the geometric patterns of ancient Florentine marble floors, each component of the mosaic is cut and sculpted before being hand-dyed. The collection is further adorned by settings and accessories made of brass with a light gold finish.

Lucite, brass fittings with a light gold finish.







Large Tray

code:
MSVSOSPN (Rosato)
MSVSOSTN (Trench)

Medium Tray

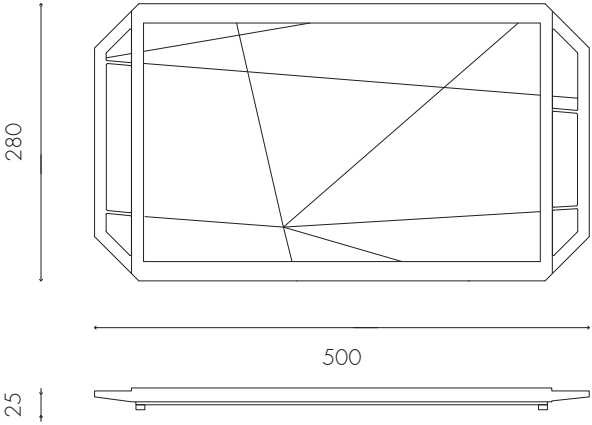
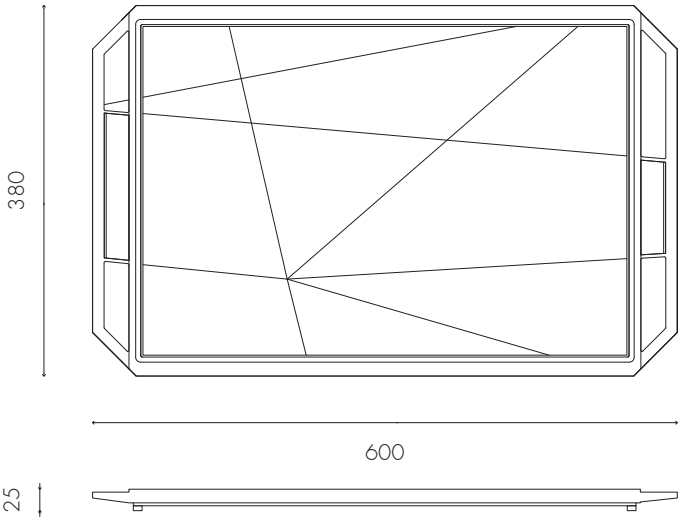
code:
MSVSMDPN (Rosato)
MSVSMDTN (Trench)

colorways:



Rosato

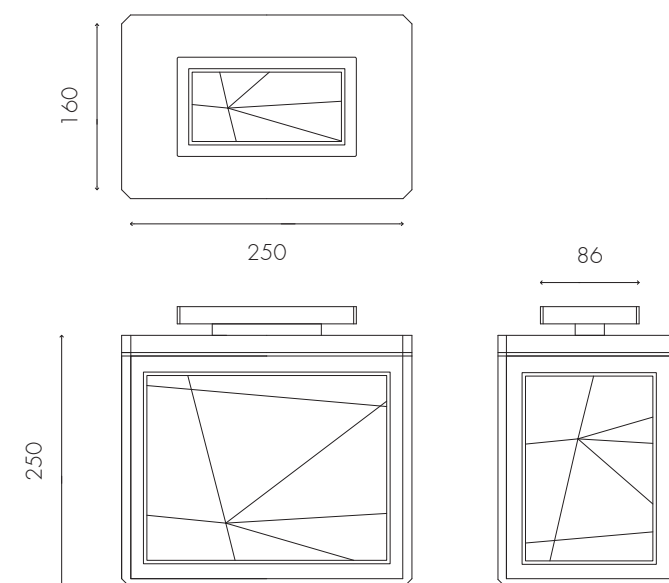
Trench





Ice Box

code:
MSPGOSPN (Rosato)
MSPGOSTN (Trench)

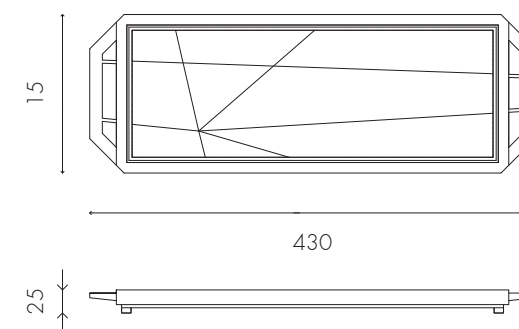




Guantiera Tray

code:
MSGNOSPN (Rosato)
MSGNOSTN (Trench)

colorways:





Candlestick

code:
MSPCOSPNI (Rosato)
MSPCOSTNI (Trench)

colorways:



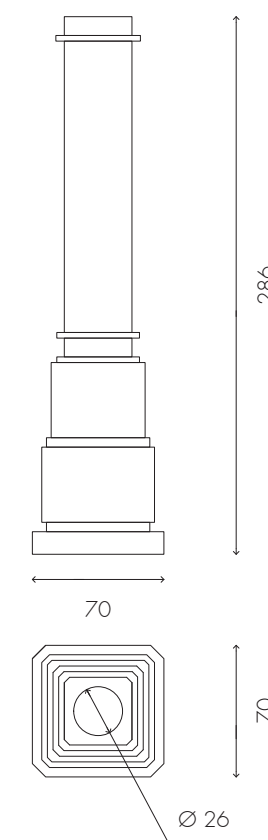
Rosato



Trench



NB. the candle-cups are made of
hand blown tempered glass





Box

code:
MSSCOSPNI (Rosato)
MSSCOSTNI (Trench)

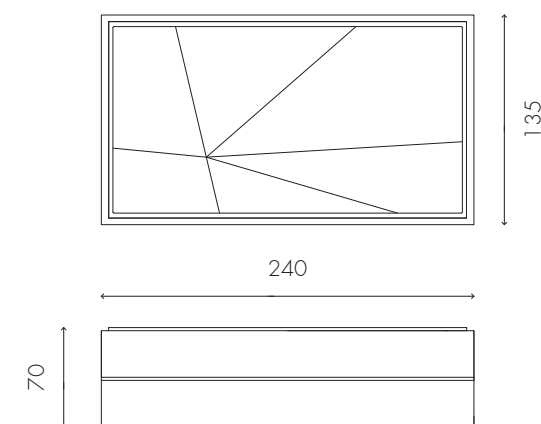
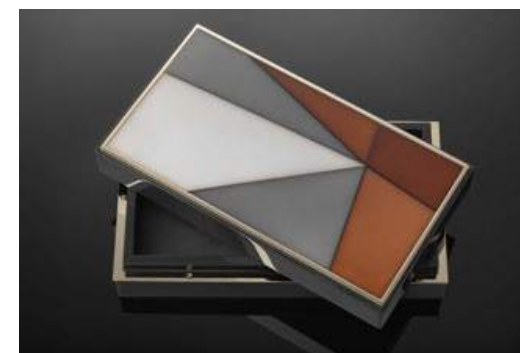
colorways:



Rosato



Trench







Small Frame

code:
MSCRSMPN (Rosato)
MSCRSMTN (Trench)

Large Frame

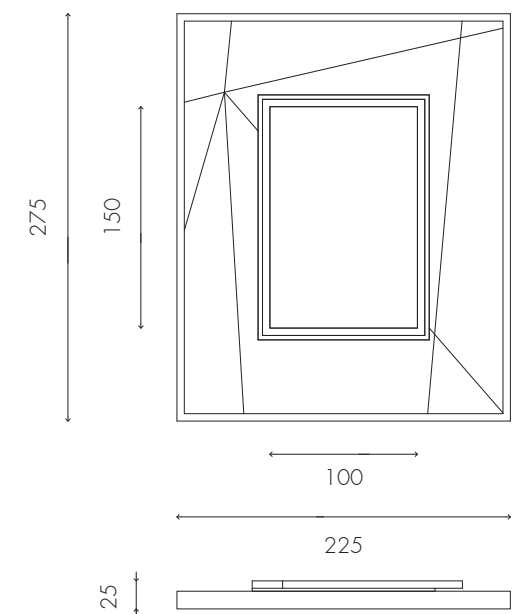
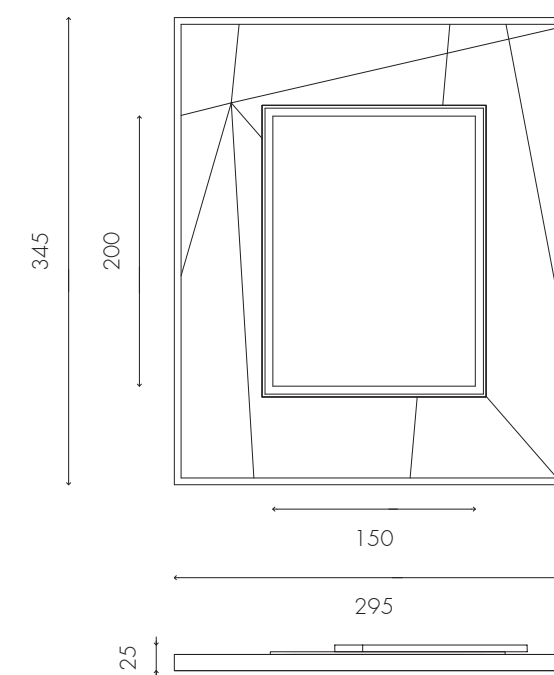
code:
MSCRBGPN (Rosato)
MSCRBGTN (Trench)

colorways:



Rosato

Trench



Mosaico

Diana

Although inspired by Diana goddess of the hunt, only shed horns are used for this collection. The deep brown lucite coupled with a veined ivory lucite underscores this theme, while the horns are mounted with brass caps finished in silver.

Lucite, shed horn tips, brass fittings with a silver finish.

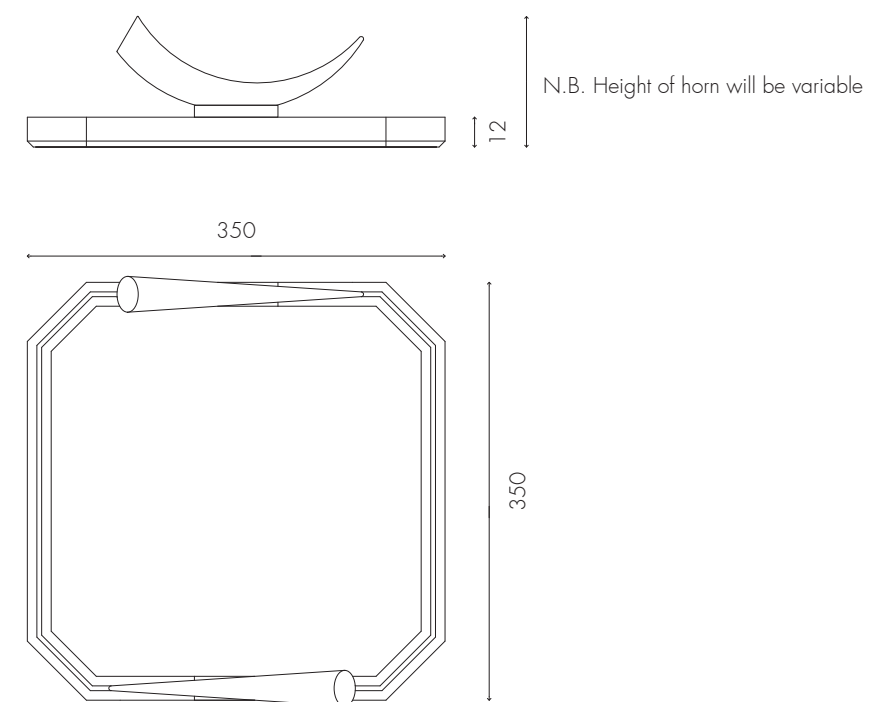






Tray

code:
DNVSOSMK



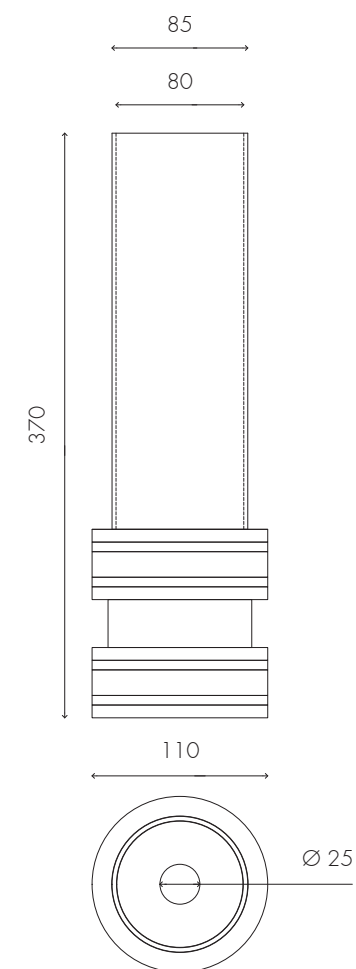


**Candle holder with
etched glass**

code:
DNPCOSVD

**Candle holder with
smooth glass**

code:
DNPCOSMK



Diana

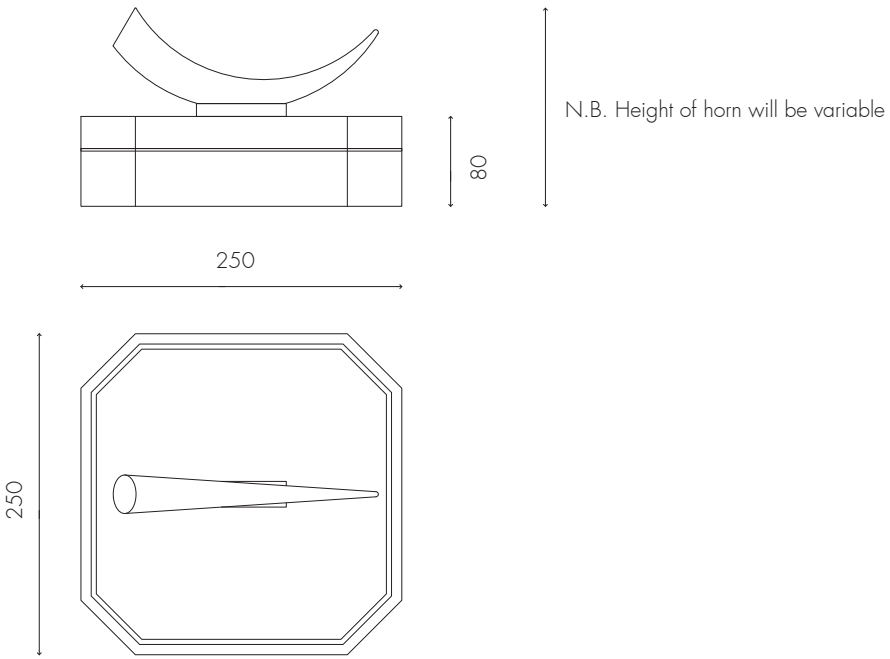


The glass of the hurricane lamps is made of tempered hand blown glass. The version depicting a sylvan scene is etched entirely by hand by expert artisans from the Moleria Locchi of Florence.



Box

code:
DNSCOSMK



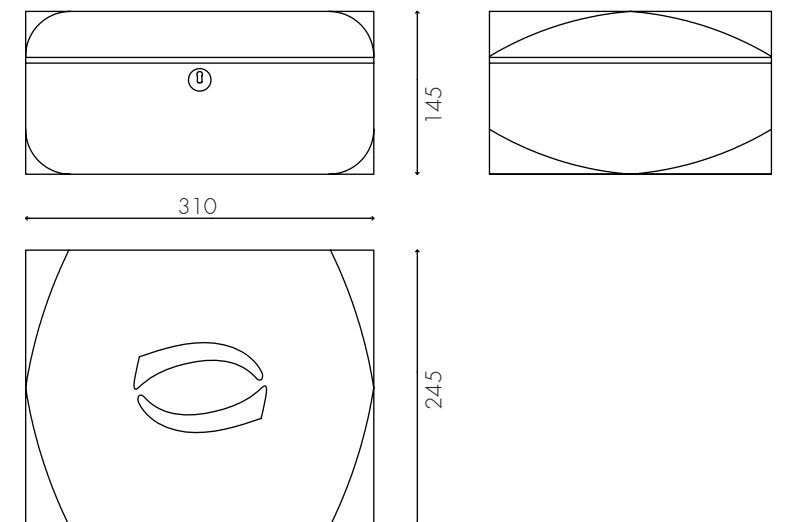


Humidor

code:
DNHUBGMK



N.B. Height of horn will be variable

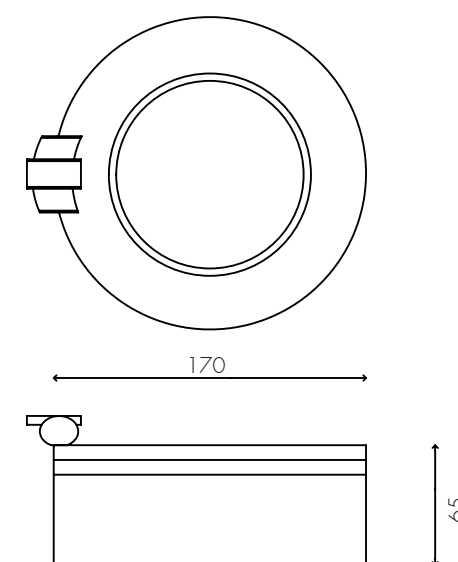


Diana



Cigar Ashtray

code:
DNPNOSMK



Diana

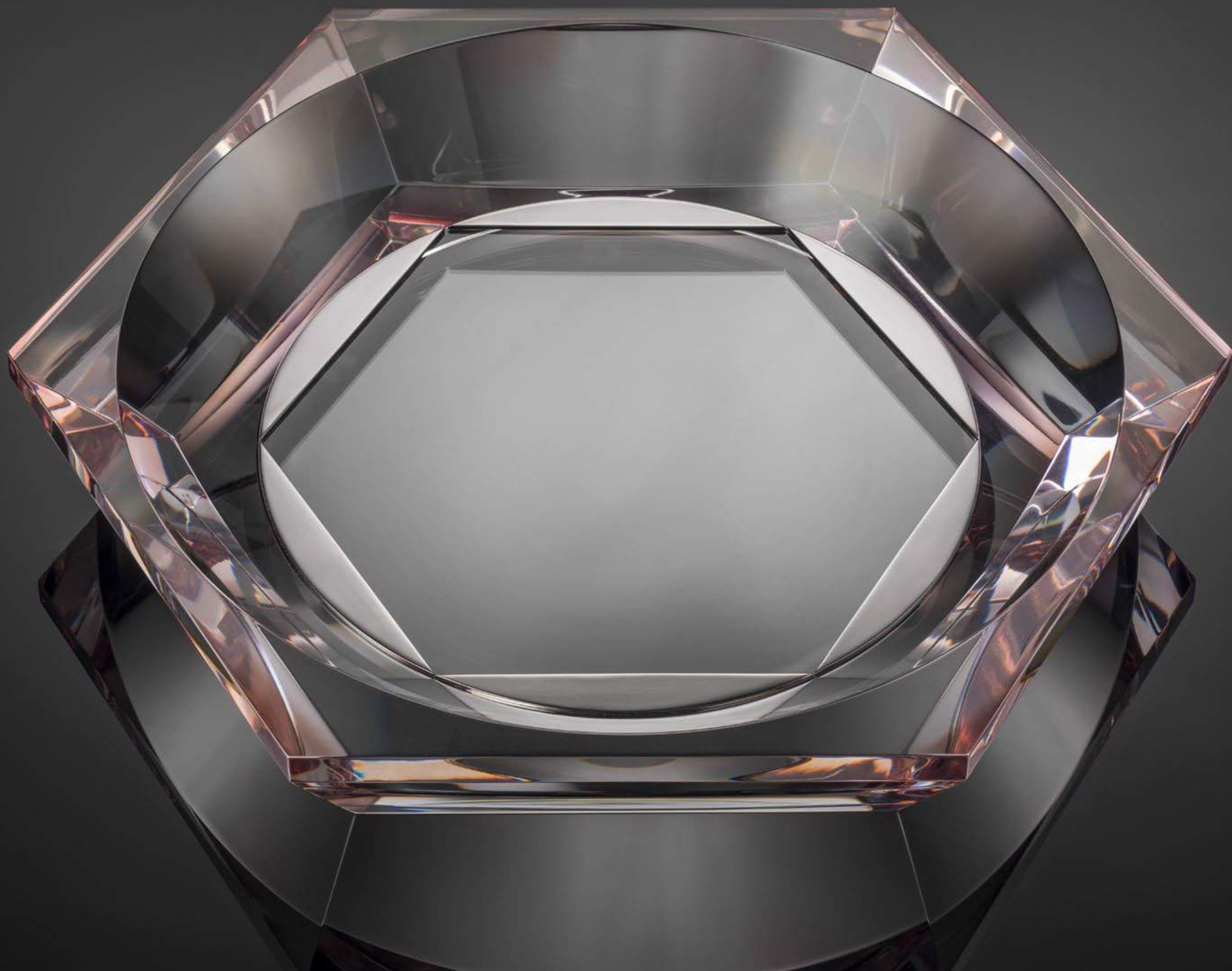
Degradé

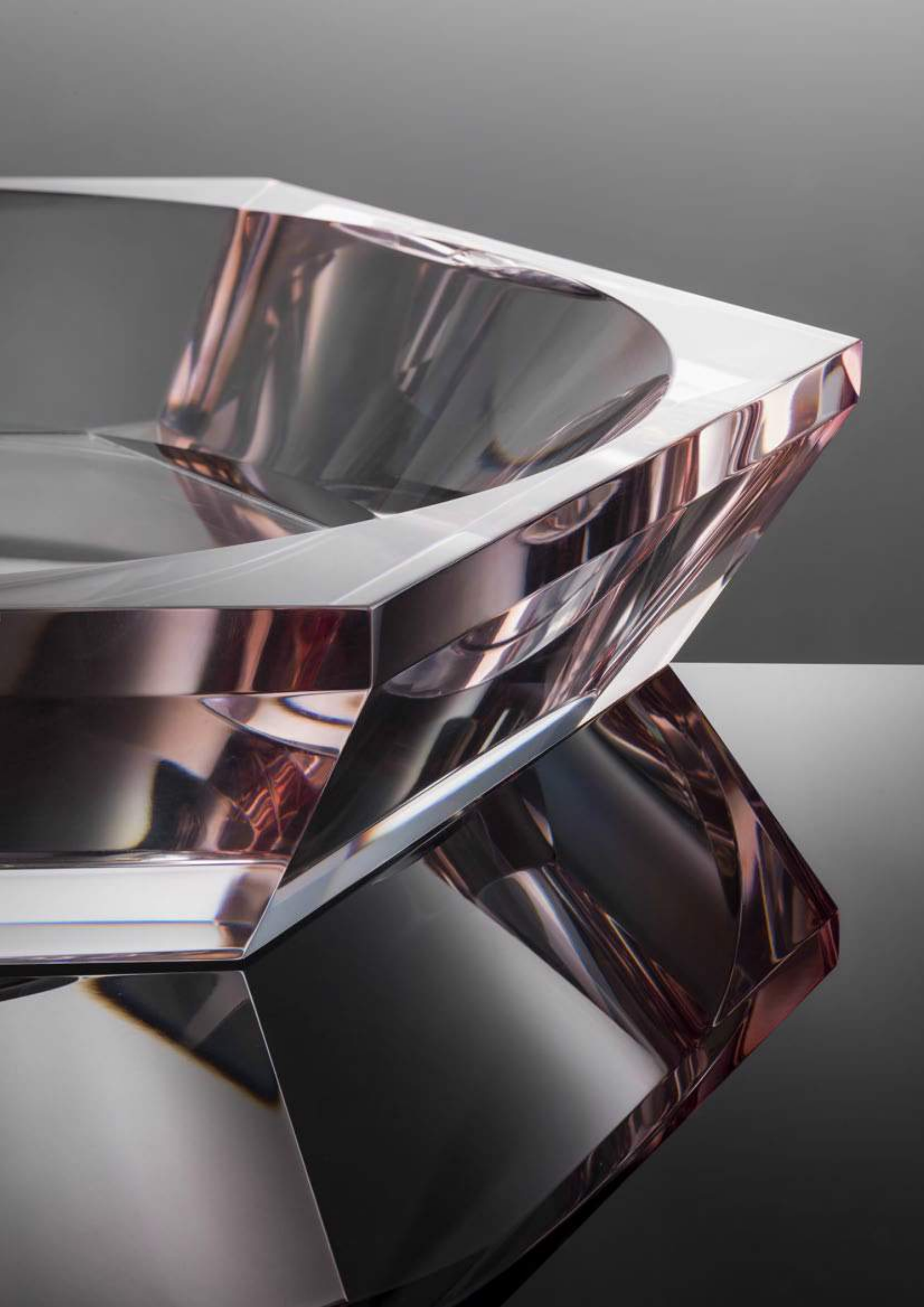
Inspired by an emerald cut diamond, the facets of plexy are cut by precision instruments guided by expert hands. Once sculpted, each piece is dipped by hand in pigment in order to achieve the right level of color and shading.

The collection is further adorned by settings and accessories made of brass with a ruthenium finish.

Lucite, brass fittings with a dark ruthenium finish.







Vide-Poche

code:
DGVSBGAU (Aubergine)
DGVSBGFM (Charcoal)

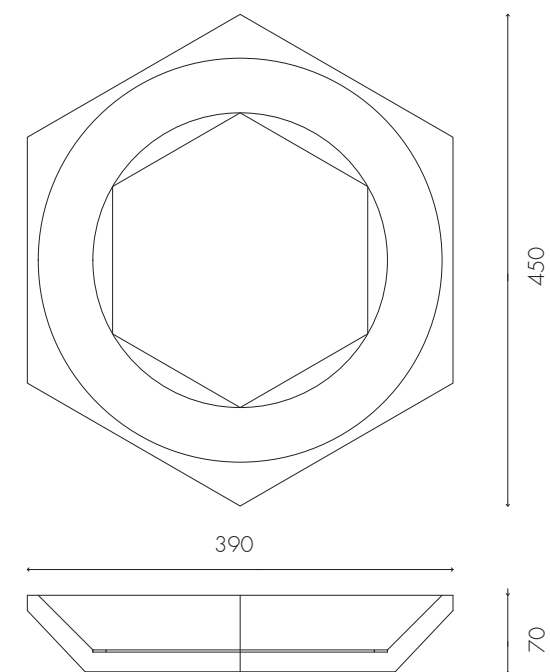
colorway:



Aubergine



Charcoal

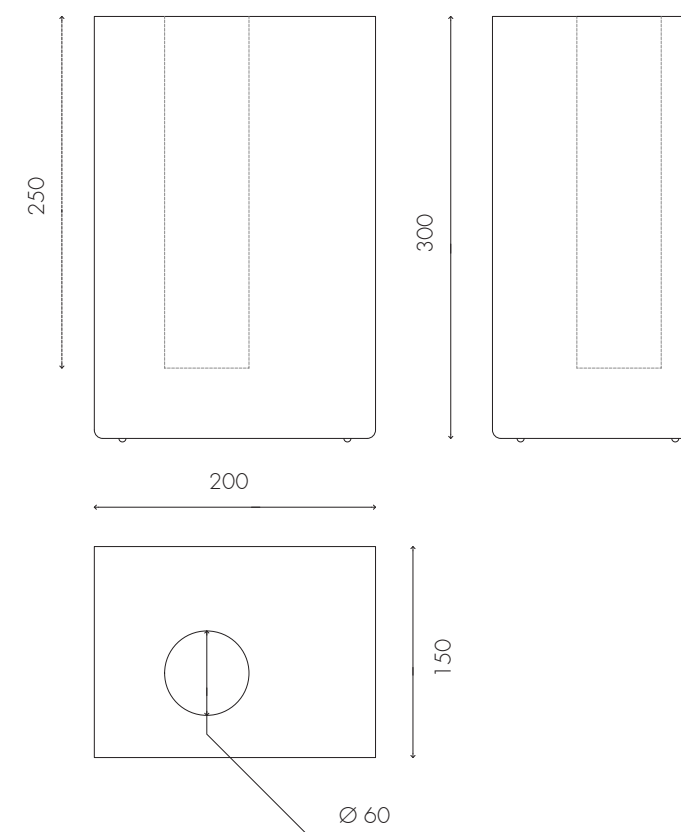


Degradé



Vase

code:
DGVAXIAU



Degradé



code:
DGNOSAU (Aubergine)
DGNOSFM (Charcoal)

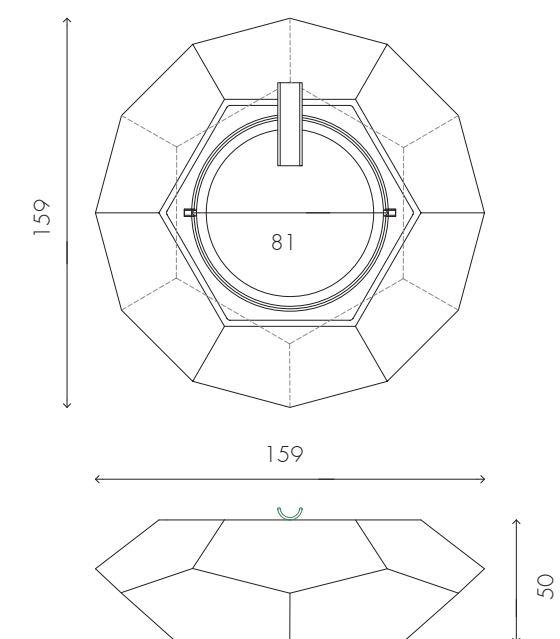
colorway:



Aubergine



Charcoal



Degradé



Lighter

code:

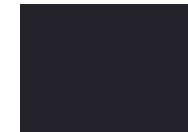
DGPAOSAU (Aubergine)

DGPAOSFM (Charcoal)

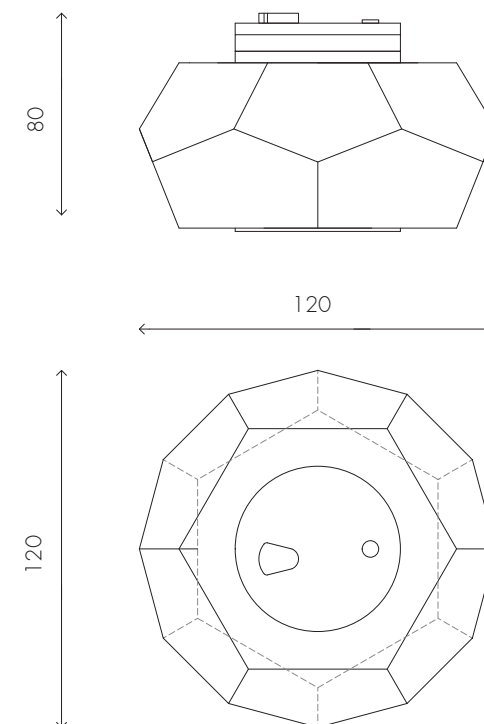
colorway:



Aubergine



Charcoal





Box

code:
DGSCOSAU (Aubergine)
DGSCOSFM (Charcoal)

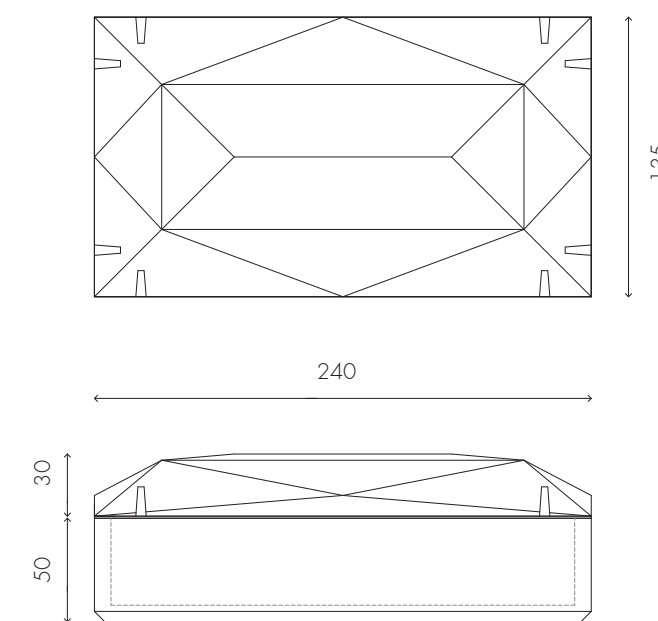
colorway:



Aubergine



Charcoal



Degradé



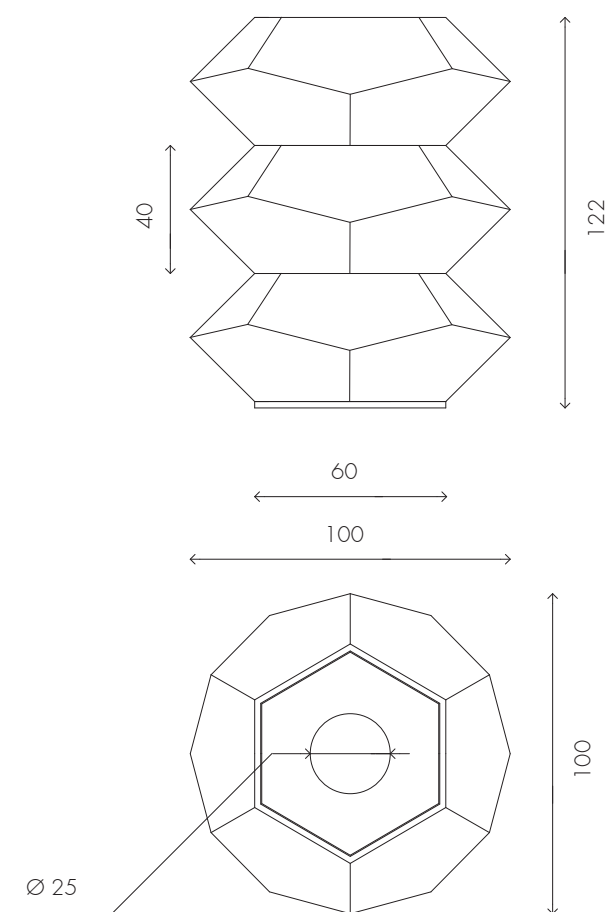
Candle Stick

code:
DGPCOSAU (Aubergine)
DGPCOSFM (Charcoal)

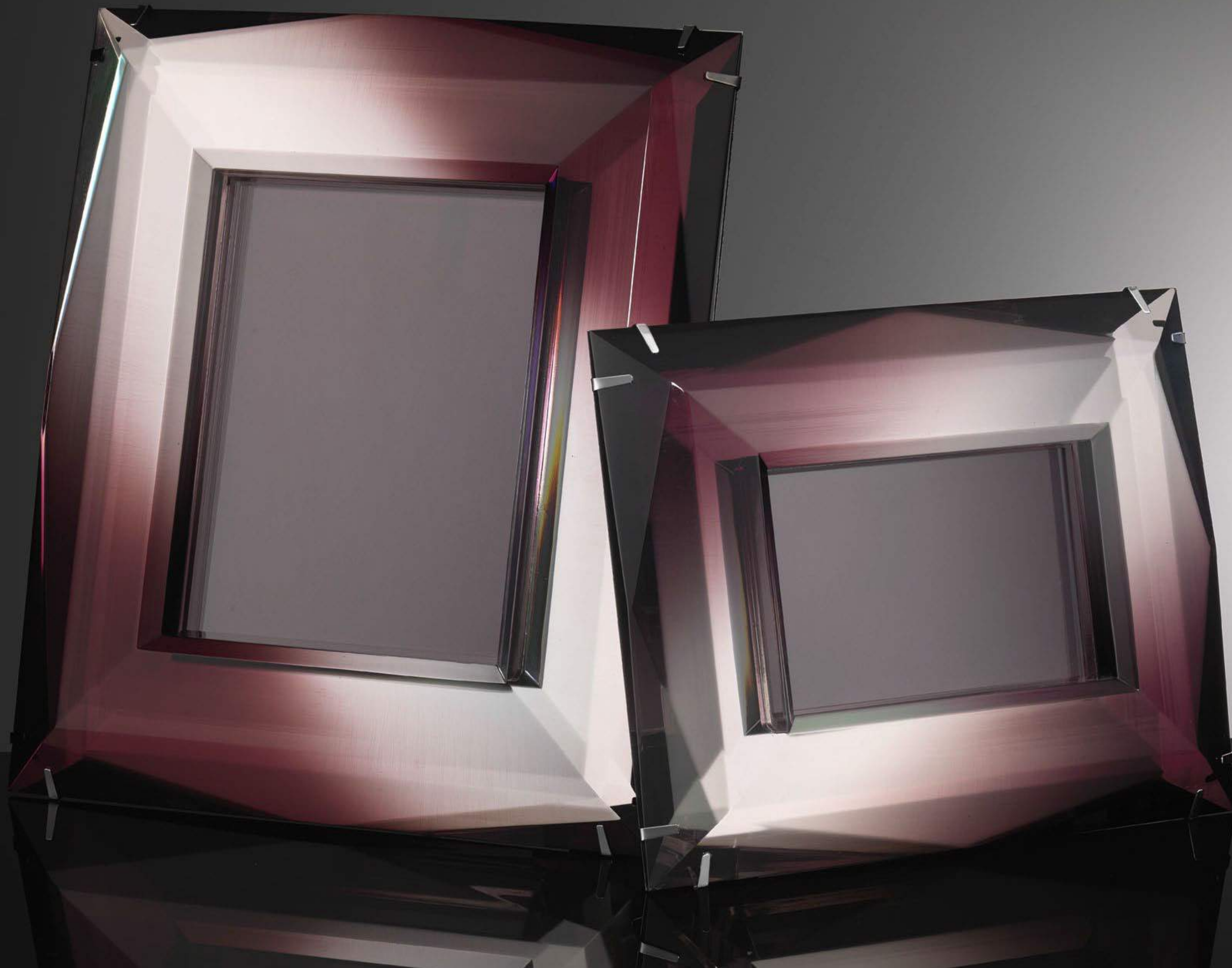
colorway:

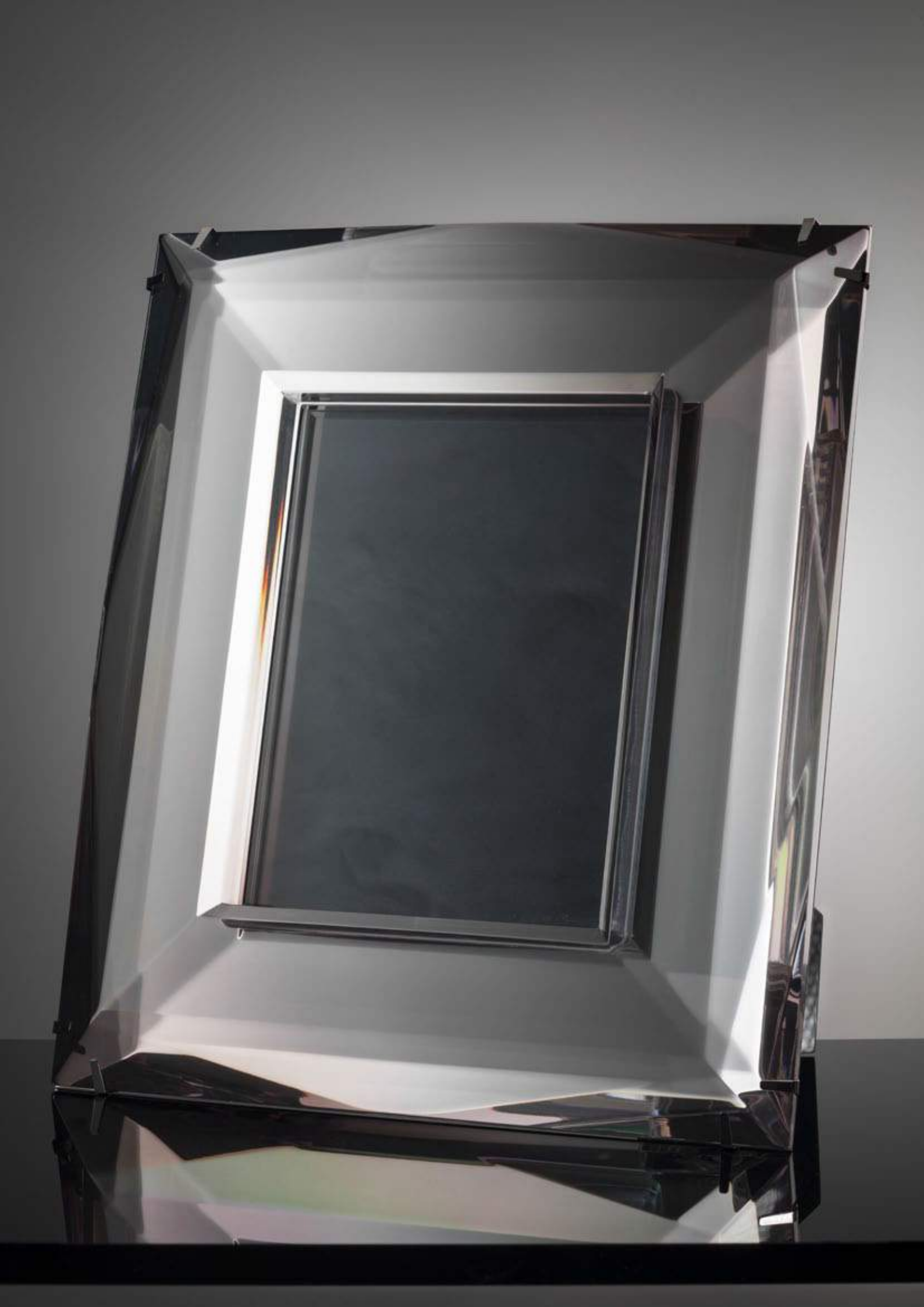


Aubergine Charcoal



Degradé





Large Frame

code:
DGCRBG AU (Aubergine)
DGCRBG FM (Charcoal)

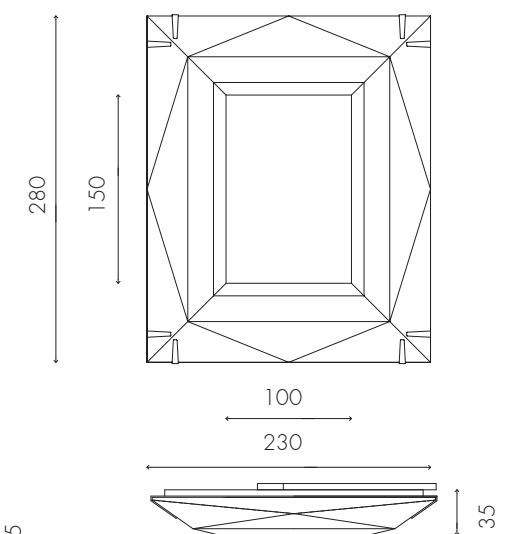
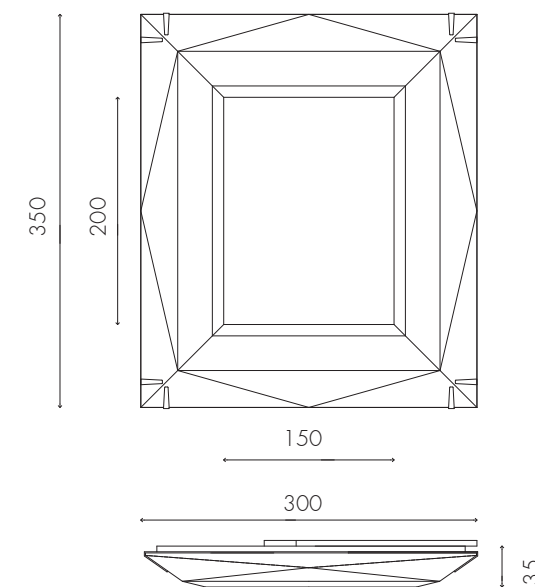
colorway:



Aubergine



Charcoal



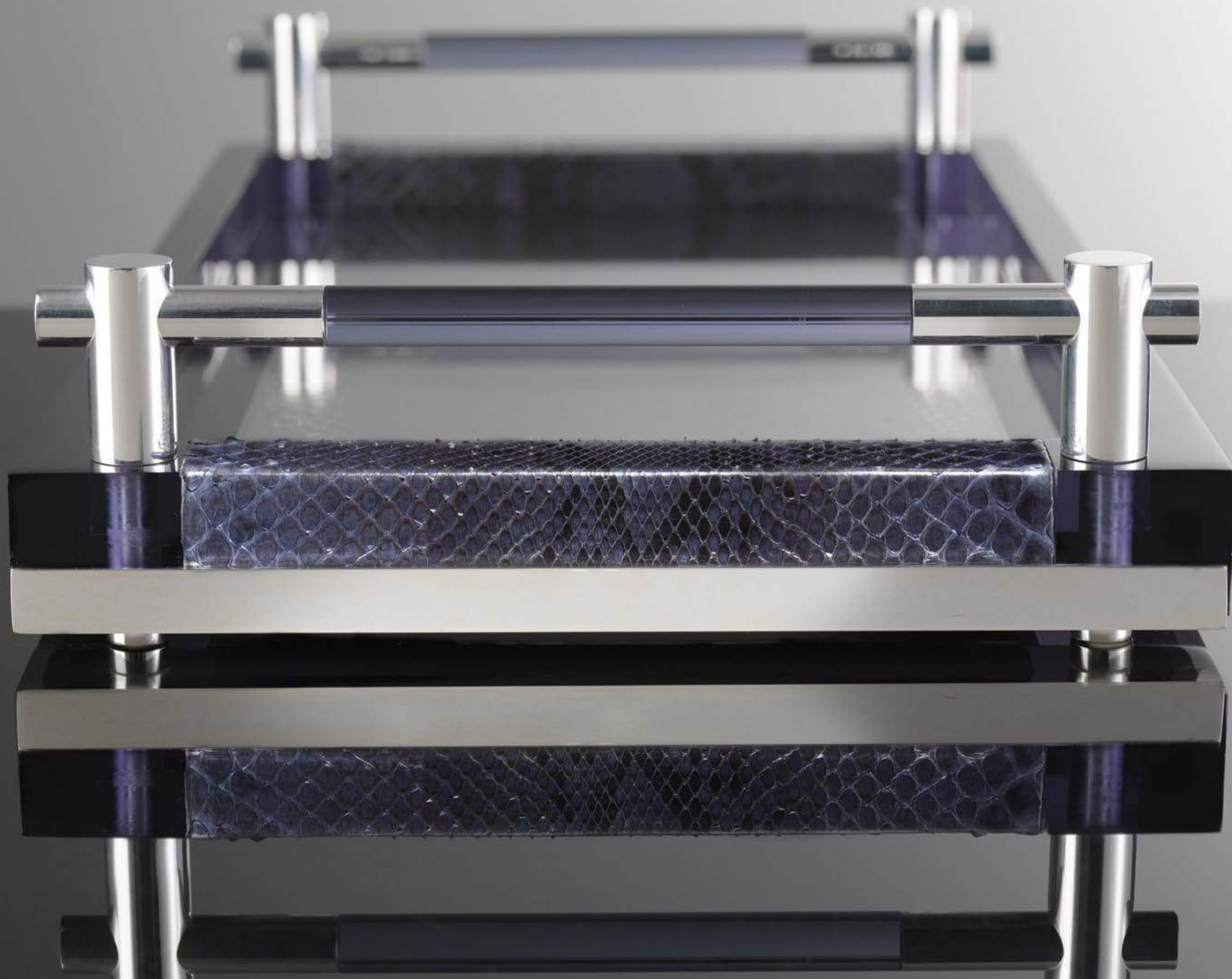
Degradé

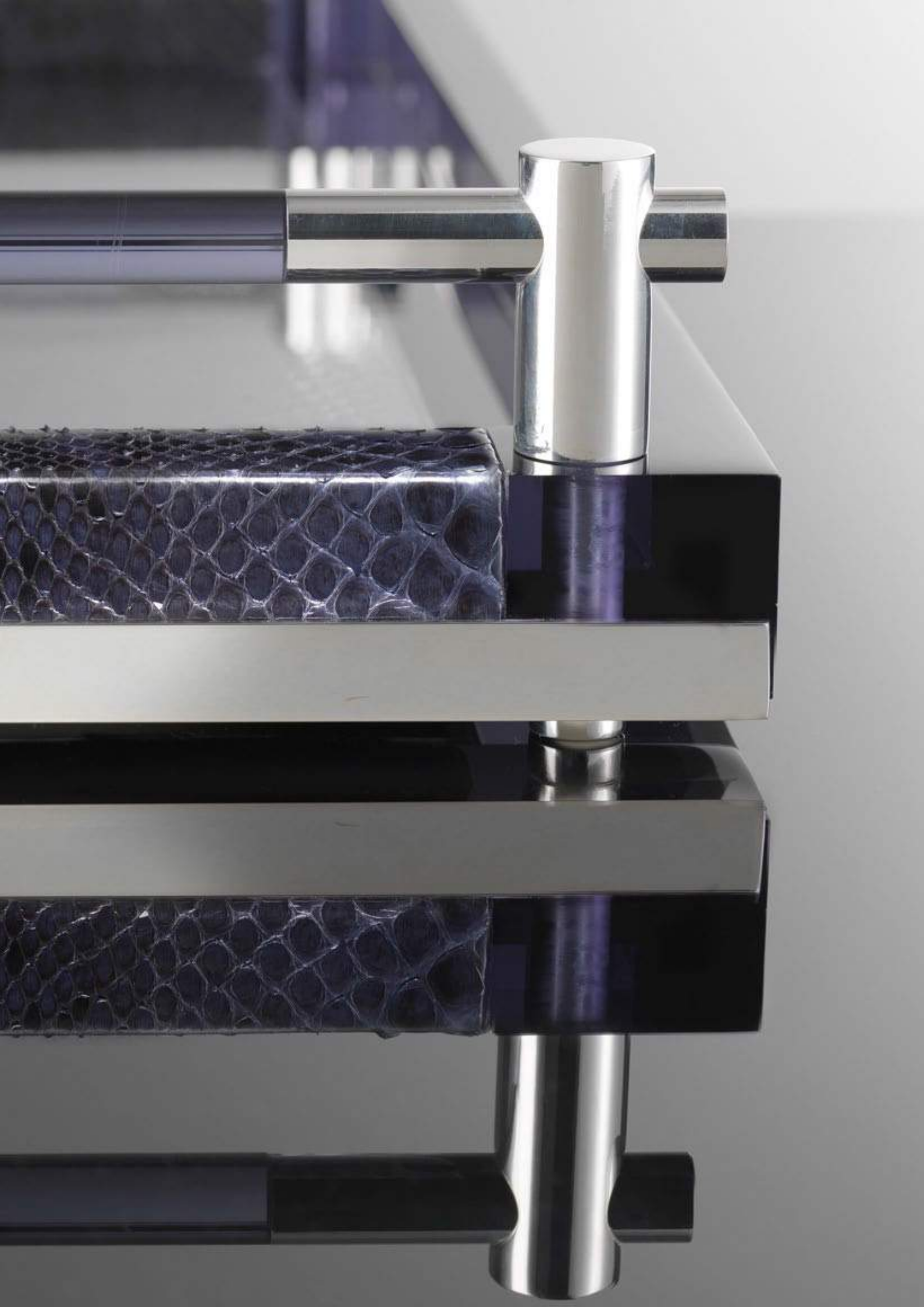
Pitone

A play on color – midnight blues and browns, and a play on textures – python skin, lucite and metal, make for an extraordinarily chic combination.

Lucite, python skin, brass fittings with a silver finish.

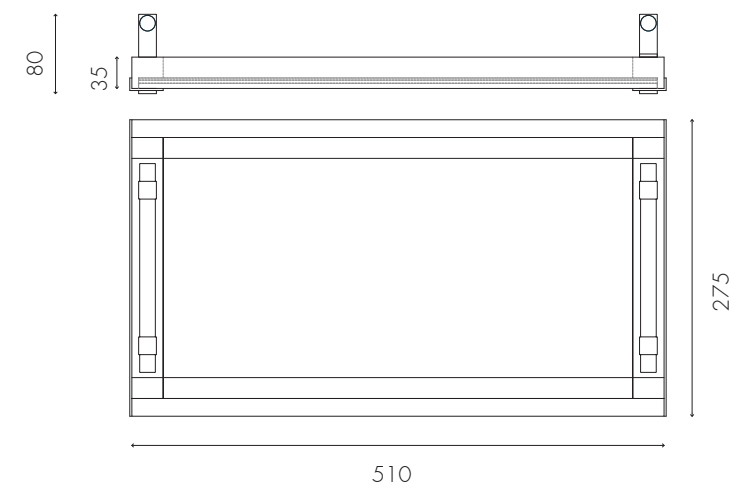




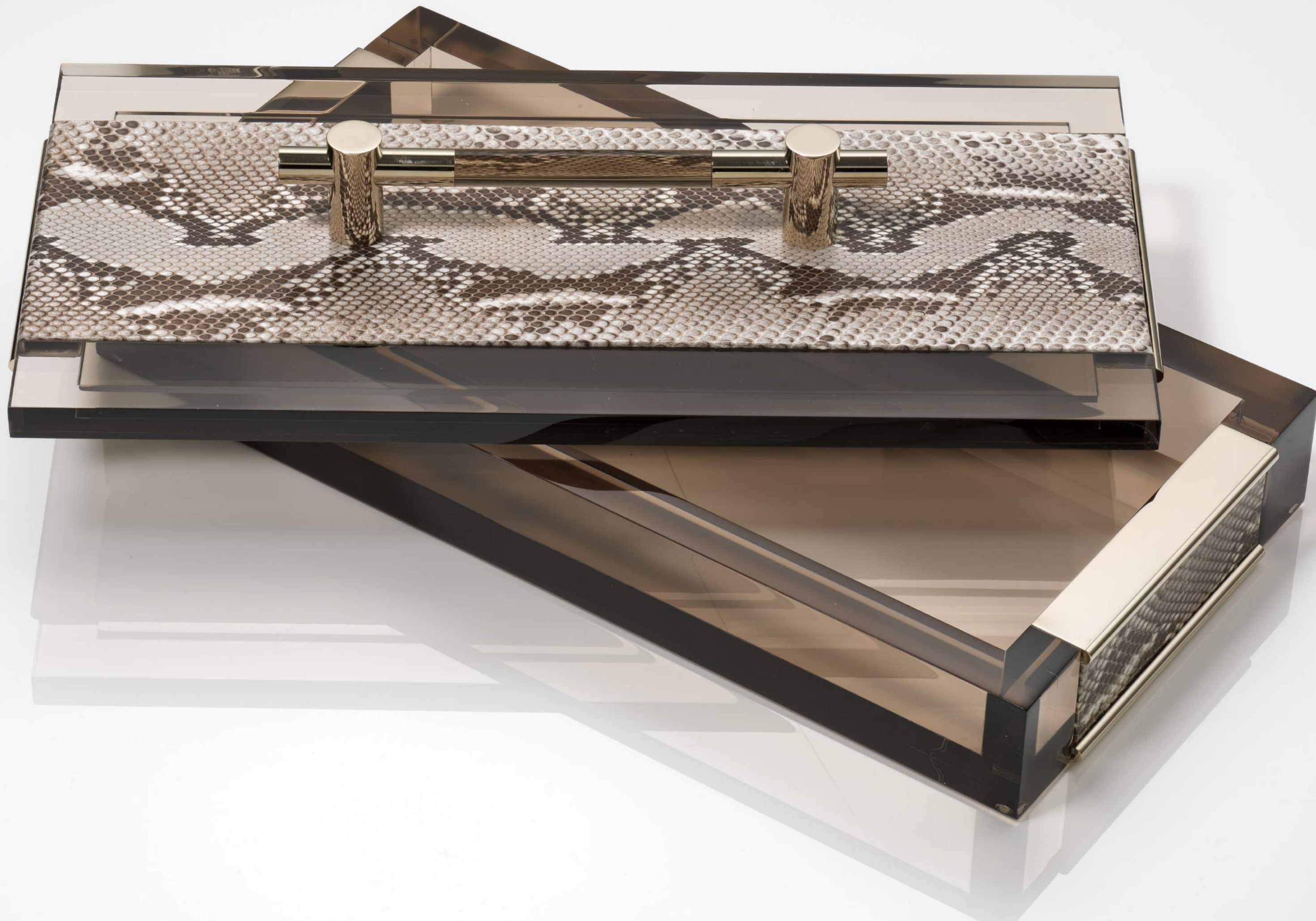


Tray

code:
PTVSOSBU (Blu)
PTVSOSFM (Fumé)



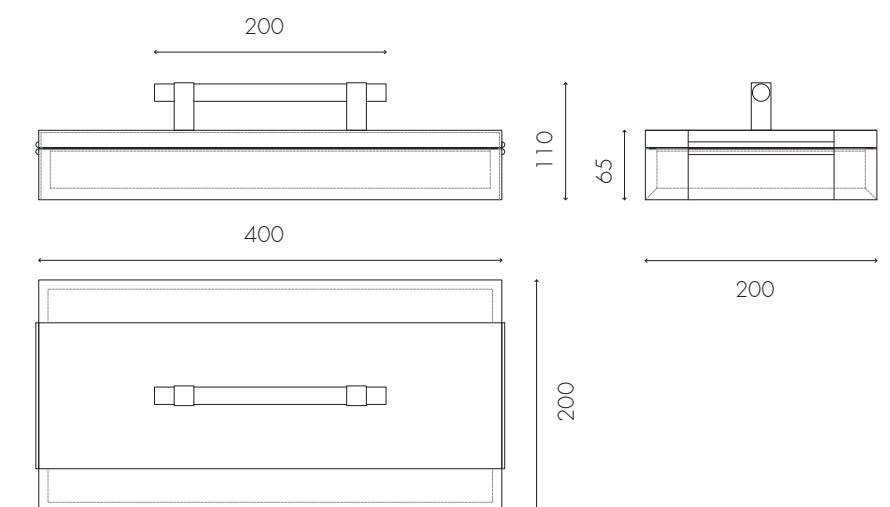
Pitone





Box

code:
PTSCOSBU (Blu)
PTSCOSFM (Fumé)





SILIA
via Minima, 1r
50124 Firenze
Italia

SILIA
designed worldwide
made entirely in Italy